

**Region**

- Southeast
- South Central
- Midwest
- Northwest
- International

**Director**

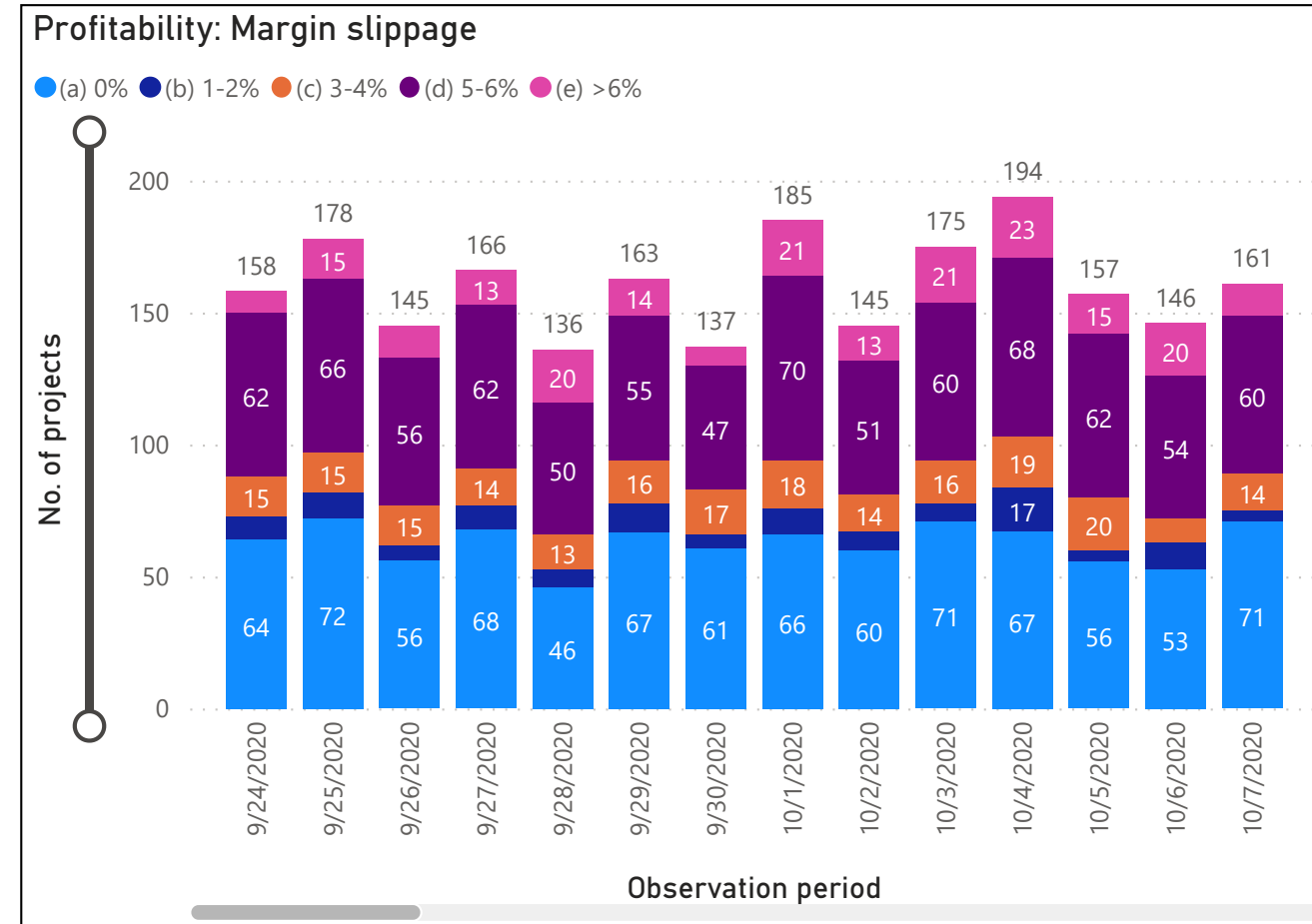
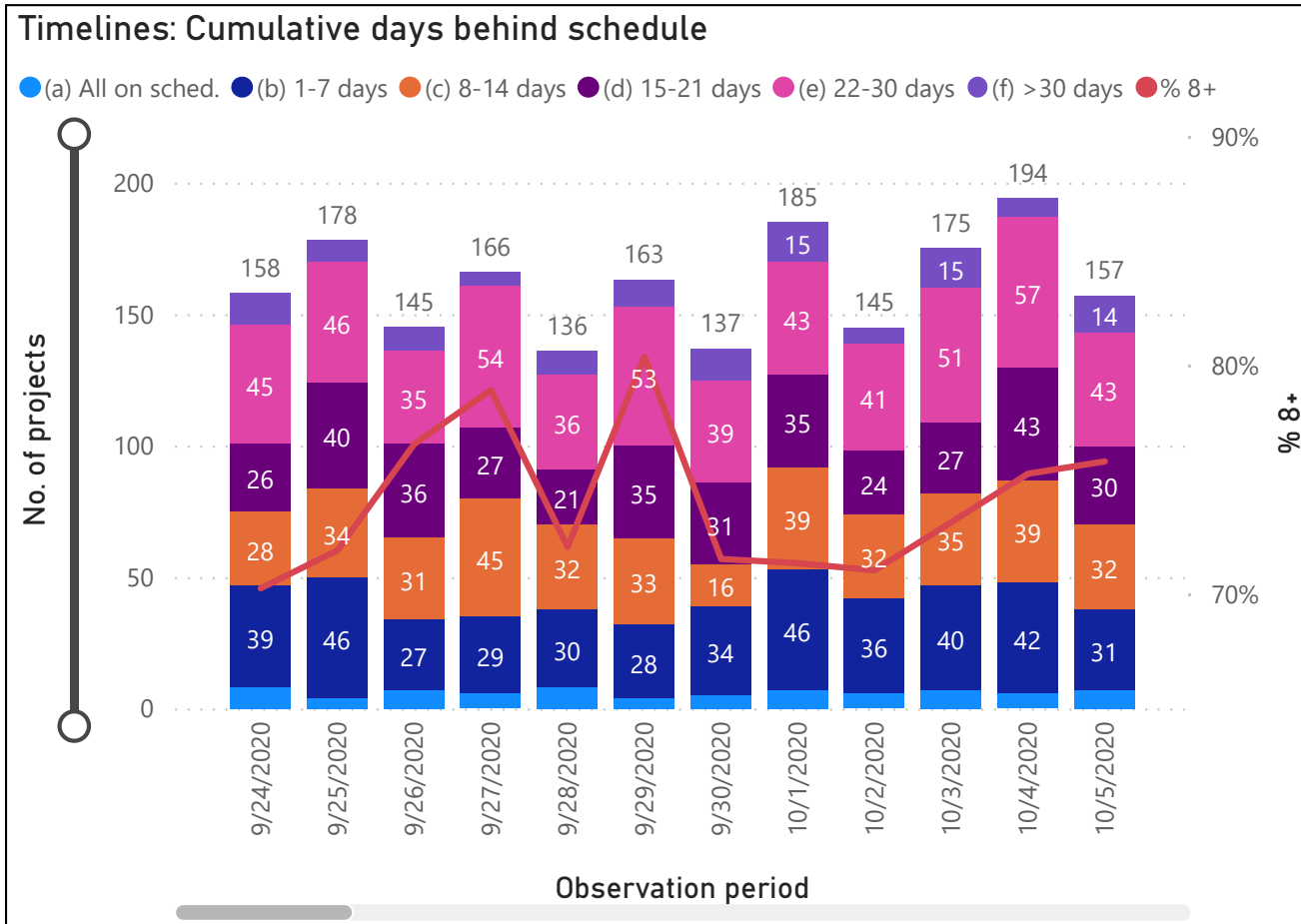
- Allen, Zachary
- Annetti, Lisa
- Boggs, Raymond
- Emhart, Sandy
- Finch, Brandon
- Hallem, Amanda

**Project manager**

- Alfonso, Leon
- Angotti, Olivia
- Chatterjee, Dilip
- Dipani, Sara
- Hummel, Sarah
- Koons, Austin

**Observation period**

9/24/2020 11/30/2020



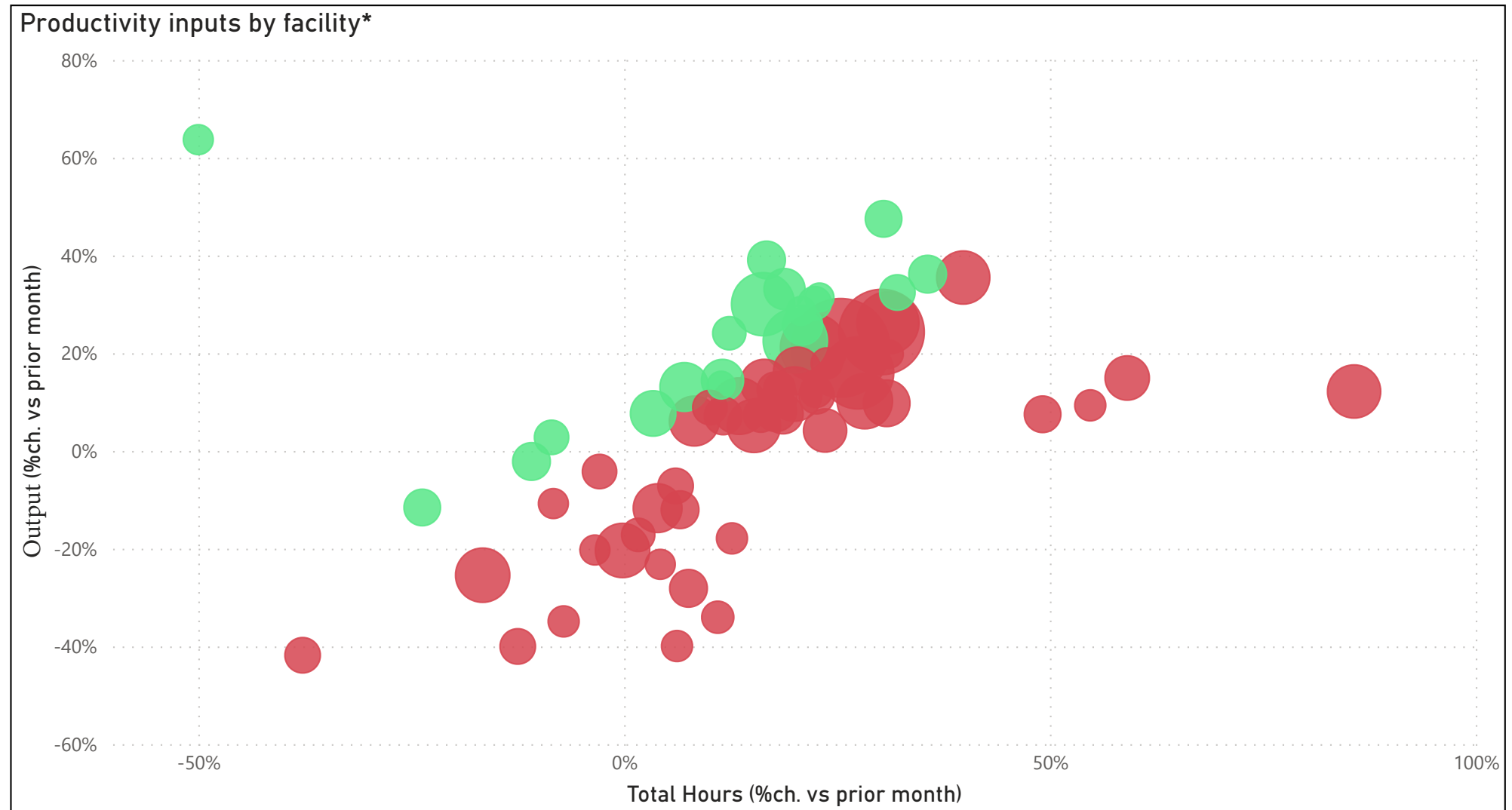
# Productivity inputs by facility

Month

Facility

Limit to top 70 facilities?

Employee Type



\*Bubble colors correspond to quadrant. Bubble size corresponds to facility's throughput in selected month.

\*\*Hours data for company employees only. Filter out "Facility Staff" Employee Type to show throughput and productivity based on output by employees only.

# Output Flow

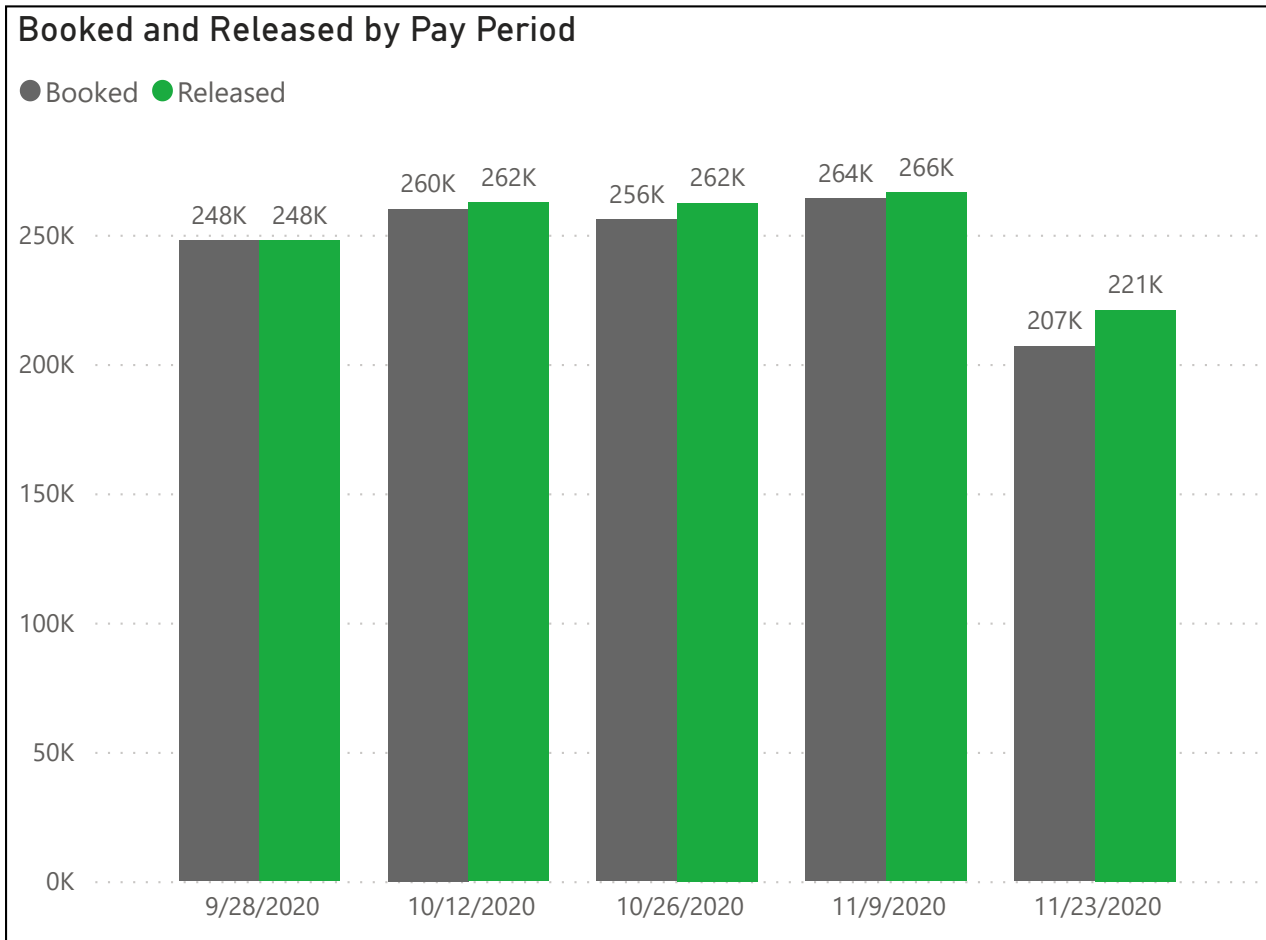
Pay Period

Facility

Director

Customer Type

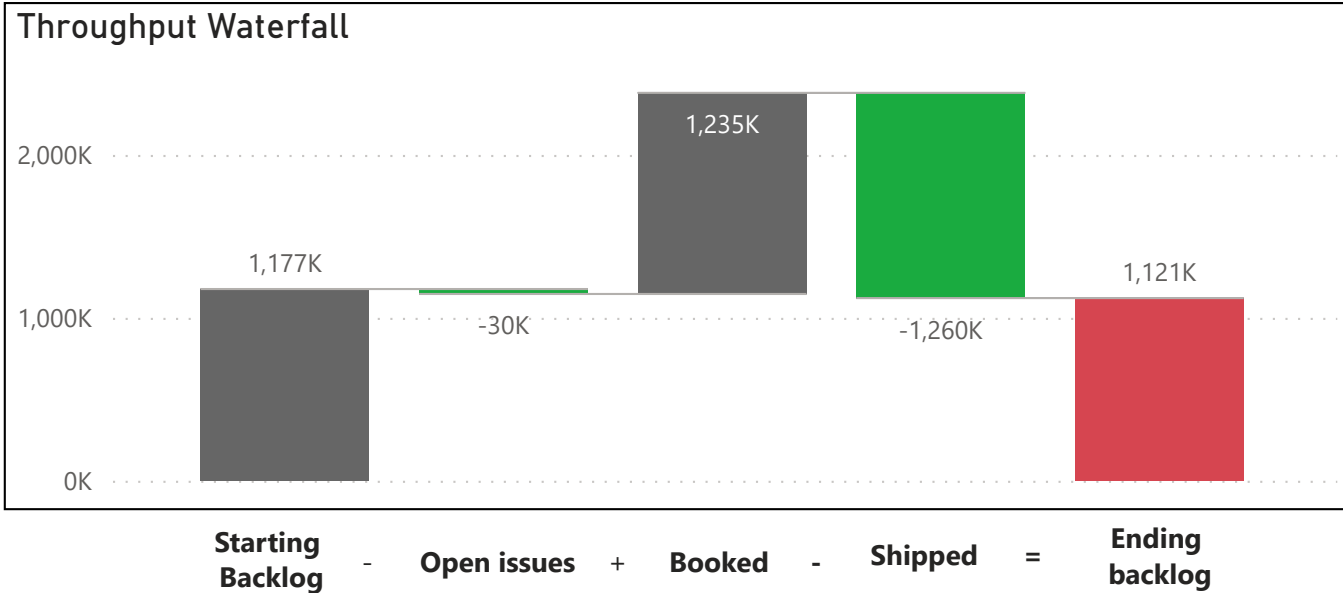
Employee Type



### Output Flow

Pay Period	Starting Backlog	Open issues	Booked	Shipped	Ending Backlog	T3M Newly Received
11/23/2020	228,633	5,647	206,891	220,929	208,948	253,942
11/9/2020	230,999	6,378	263,997	266,363	222,255	249,530
10/26/2020	237,401	6,892	255,874	262,276	224,107	252,778
10/12/2020	239,884	5,842	259,963	262,446	231,559	253,559
9/28/2020	239,939	5,550	247,794	247,849	234,334	249,750

Pay Period



\*Filter out "Facility Staff" Employee Type to show booked and shipped throughput for employees only.

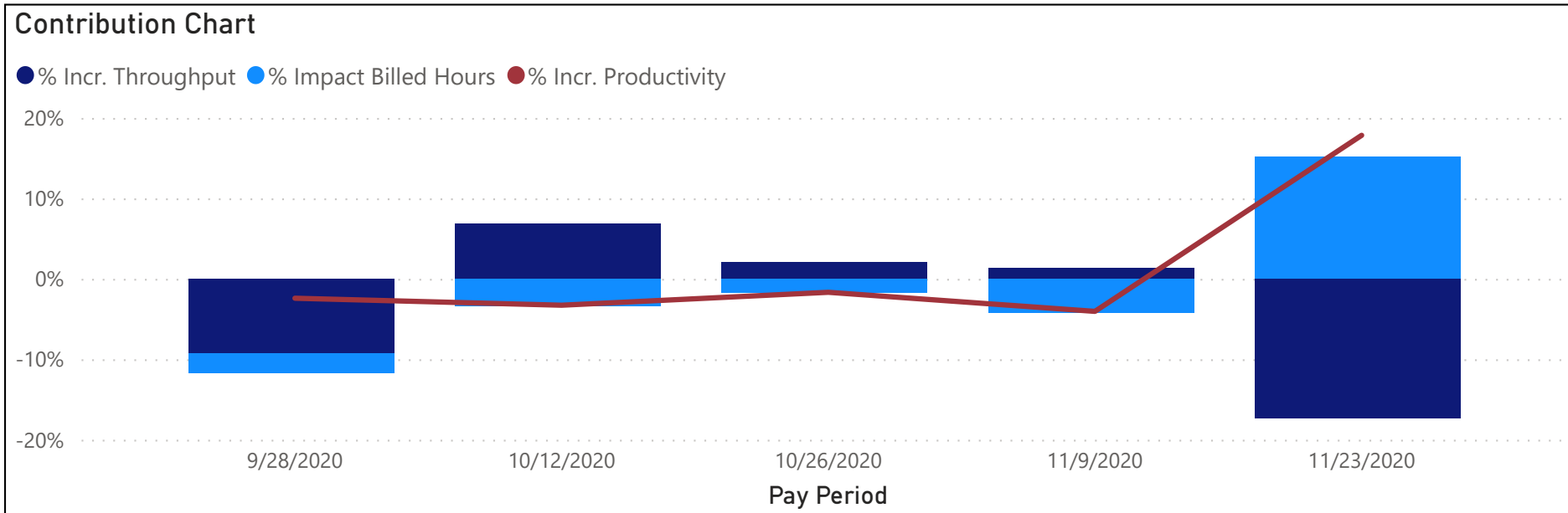
# Contribution Charts

Pay Period	Incr. Throughput	% Incr. Throughput	Incr. Hours	% Incr. Hours	Incr. Productivity	% Incr. Productivity
11/23/2020	-36,940	-17.3%	-9,372.50	-15.1%	0.64	17.8%
11/9/2020	2,794	1.3%	2,502.00	4.2%	-0.18	-4.0%
10/26/2020	4,243	2.1%	992.25	1.7%	-0.08	-1.7%
10/12/2020	13,288	6.9%	1,913.50	3.4%	-0.15	-3.3%
9/28/2020	-19,698	-9.3%	1,360.75	2.5%	-0.11	-2.4%

Pay Period

Facility

Director



\*Data shown based on output and hours billed by company employees only.

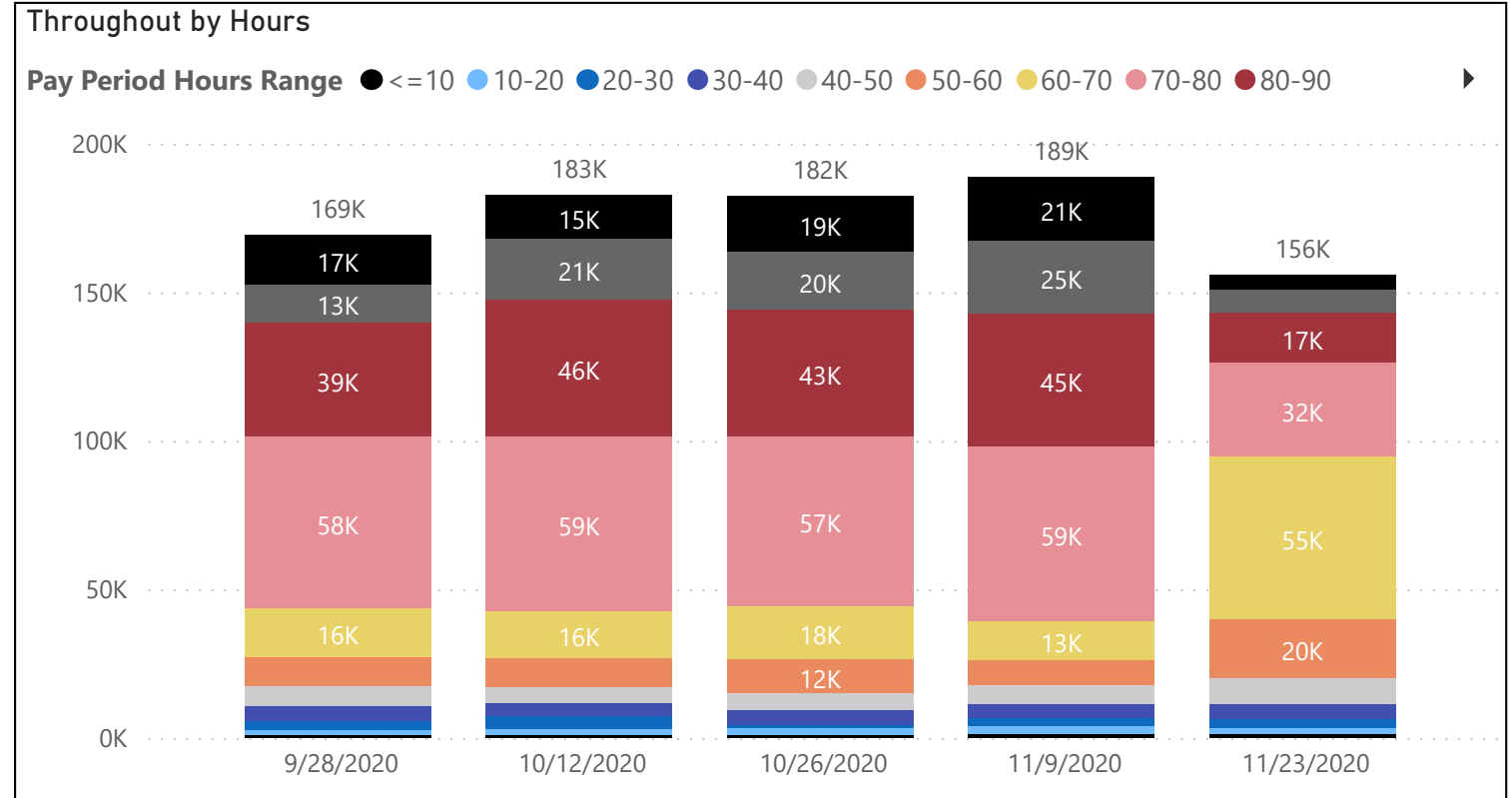
# Throughput Distribution by Hours Worked per Pay Period (Overtime Analysis)

Pay Period

Facility

Director

Pay Period Hours Range	Output per hour (employee)	% of Output	% of Employees	Hours
Greater than 100	4.3	8.70%	2.95%	17,987.8
90-100	3.9	9.71%	4.29%	22,055.0
40-50	3.0	3.75%	4.40%	10,869.8
80-90	3.0	21.43%	13.98%	63,616.5
70-80	2.9	30.06%	21.57%	90,018.3
50-60	2.9	6.79%	6.80%	20,697.5
20-30	2.9	1.68%	3.79%	5,179.3
60-70	2.8	13.34%	11.62%	41,267.0
30-40	2.5	2.72%	4.97%	9,663.8
10-20	2.3	1.12%	5.22%	4,208.3
<=10	2.0	0.71%	20.40%	3,134.3
<b>Total</b>	<b>3.0</b>	<b>100.00%</b>	<b>100.00%</b>	<b>288,697.3</b>



Note: Number of Employees calculated using non-distinct count of Employee ID to capture the same employee working the same biweekly hour range across multiple facilities

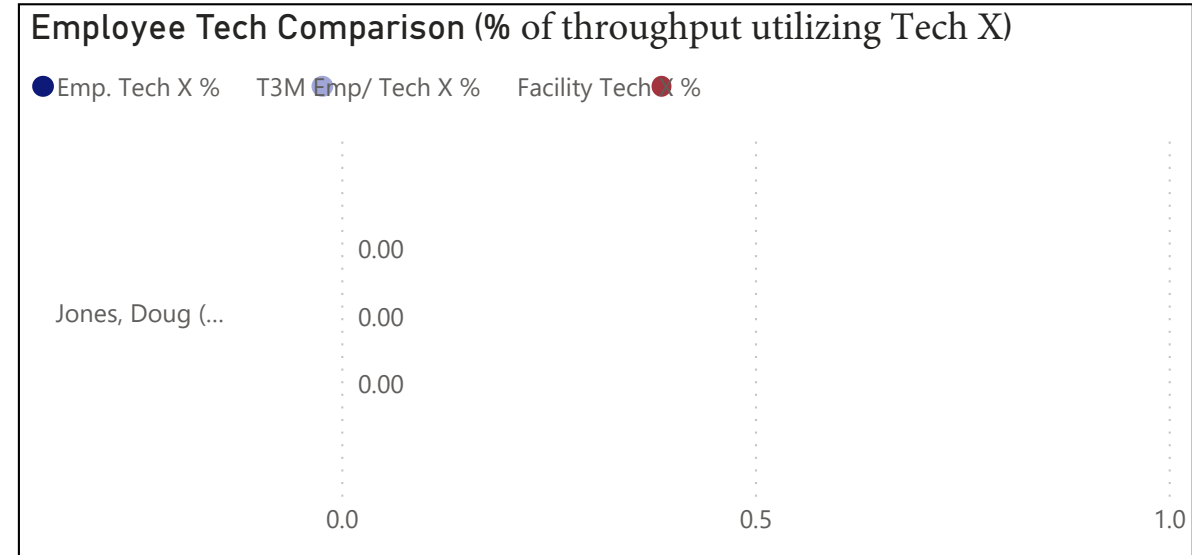
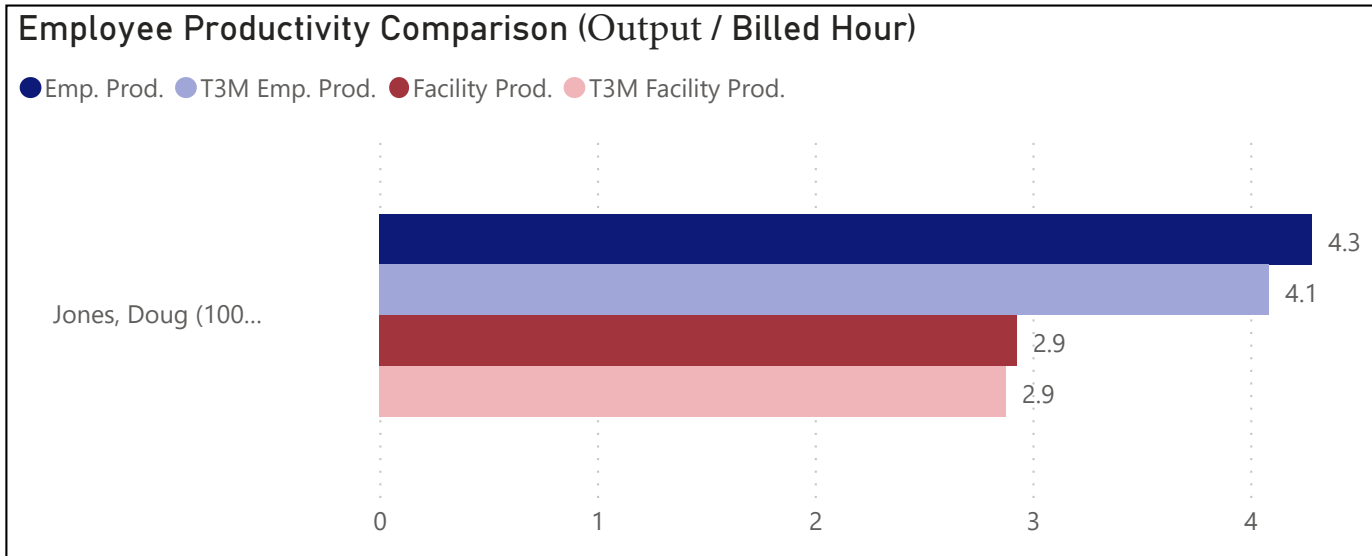
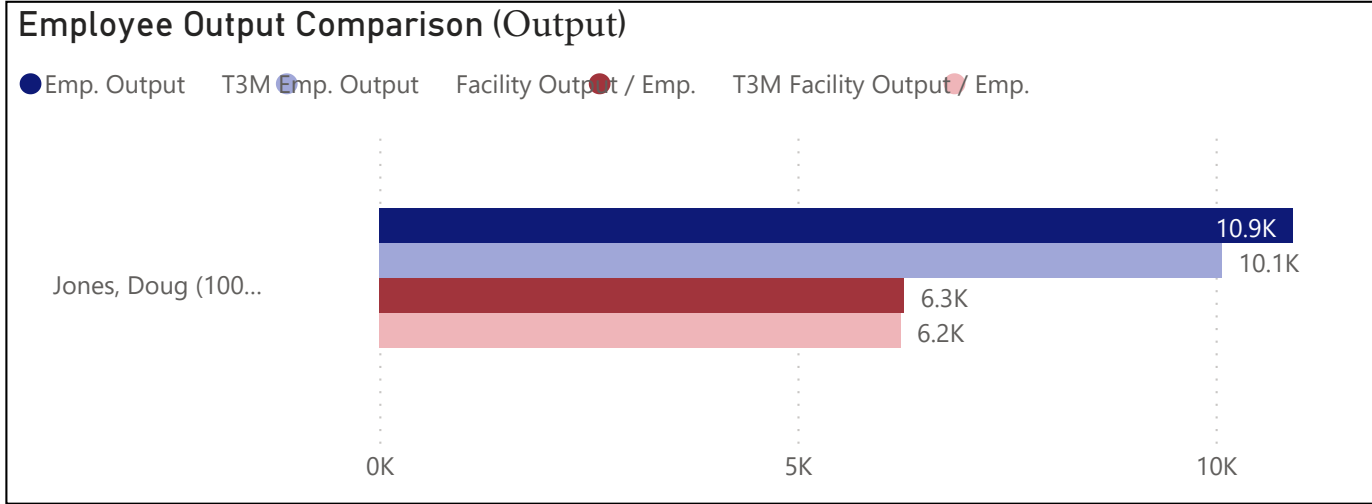
# Employee Scorecards

Pay Period ▼  
 ▼

Facility ▼  
 ▼

Facility Name  
**ABC Factory**

Hours billed at facility during selected period  
**2,552.0**

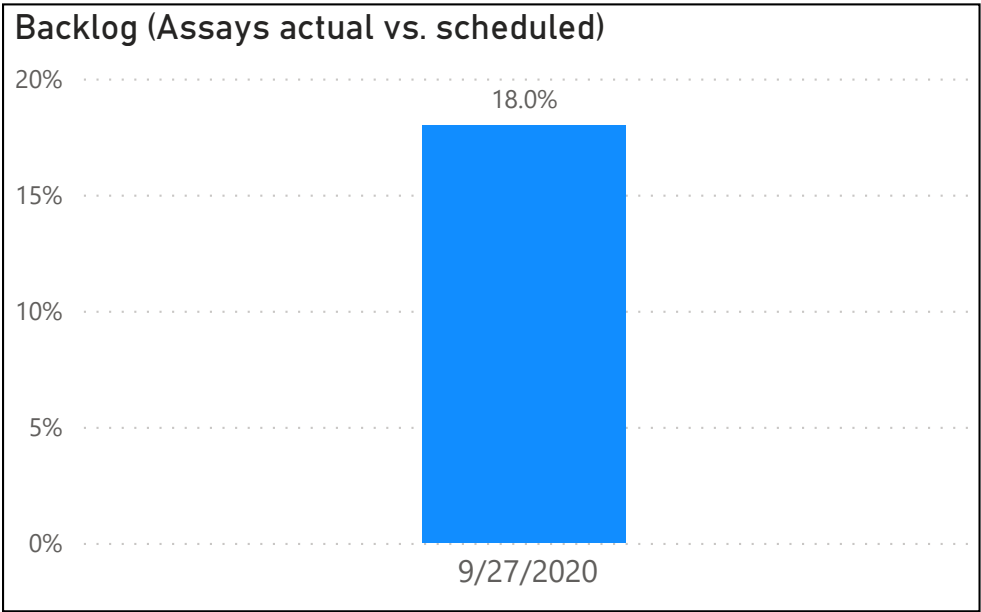
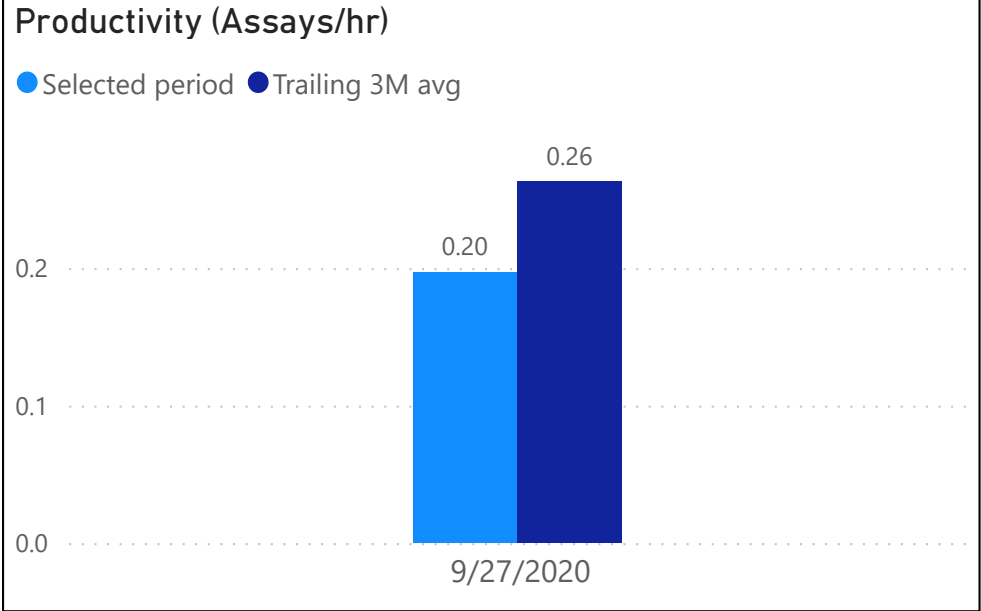




# Asset view

Asset ID  1190

Asset ID	Description	Observation period	Hours logged	Assays scheduled	Assays completed	EID of operator with most hours
1190	Eppendorf Mastercycler	9/27/2020	274	400	72	4





## Project audit trail

Project



Search

■ 941 - Clinical study 350334 (Cardioxyl Pharma)

Company ID	Event date	Event description	Component description	Action description	EID	Asset ID
941	5/15/2019	Project initiated	Project-level admin	Initiate project		
941	5/15/2019	Component budgeted - cost	Kit visit 1 subject 1	Scheduled or actual recognition of cost		
941	5/15/2019	Component budgeted - revenue	Kit visit 1 subject 1	Scheduled or actual recognition of revenue		
941	5/15/2019	Component scheduled	Kit visit 1 subject 1	Send assembled kit to site	67	
941	5/15/2019	Component scheduled	Kit visit 1 subject 1	Processing of consumed kit	67	751
941	7/7/2019	Ship raw kit to client	Kit visit 1 subject 1	Send assembled kit to site	67	